

Studio FBA - *Material Change - New from Old*

Introduction

Our studio aims to be collaborative and cross-disciplinary, and you will have the opportunity to work with both academics and practitioners and with a range of contributors from fields including engineering, ecology, heritage, curation, and Fine Art. We will also partner with a 'live' client, The National Trust and in addition to the familiar studio design practices of drawing and model making we will also work towards the building of a permanent 'welcome' structure at Washington Old Hall.

The overarching themes for the studio will mirror those of The National Trust and we will seek to engage with issues around nature and climate, history and heritage, and community. The Trust are the largest conservation charity in Europe with the stated aim of looking after "nature, beauty and history for everyone to enjoy." The Trust is responsible for protecting miles of coastline, woodlands, countryside and the hundreds of historic buildings, gardens, and precious collections.

The studio will develop work in relation to the seven National Trust sites in and around South Tyneside; Cherryburn, Gibside, Washington Old Hall, The Penshaw Monument, Souter Lighthouse, Crook Hall and the Durham Coast.

Studio structure

We will operate with a vertical studio approach with elements of cross-stage teaching and learning and the structure of the studio will provide different opportunities for students in either Stages 5 or 6. Stage 5 will work within the town of Washington, a context in which the industrial infrastructure of 43 coal mines was overlaid onto existing landscapes and settlements and then itself replaced by the establishment of an entire New Town in 1964. Students will seek to analyse, understand, and respond to these different layers of history to propose new architectural interventions within the heritage setting of Washington Old Hall. The Hall is known as the ancestral home of the first President of the United States of America, George Washington



and has been preserved by the National Trust as a monument to that connection. In reality, the history of the Hall is far more complex and interesting than this singular narrative.

Stage 6 students will have the opportunity to select their own site and to develop their own design thesis in response to one of the seven National Trust properties within South Tyneside. The starting point for a thesis might be an existing building, a landscape setting, or an ecological context, it could respond to a particular person, a practice, a process, or a specific collection. You might decide to work within the boundaries of a particular property, alternatively you might choose to explore wider urban or landscape connections or a broader social context, or seek to re-use, translate, or relocate ideas from one context to another.

Design and build

This year we will have the unique opportunity to design and build a Welcome Pavilion at Washington Old Hall. This will provide an opportunity for 'hands-on' construction

experience, and we anticipate that this will be a collaborative activity shared across both Stages. The pavilion will be part of an ongoing programme with the National Trust (we are already working on a similar project at Cherryburn) and we anticipate that the studio will design and build a structure at a different National Trust property each year. Ideas for the pavilion will be drawn from the wider research and design activities undertaken within the studio and will connect with the technology teaching, learning outcomes and assessment in semester 2.

Studio themes

This year's studio will therefore deploy a range of techniques and methods to understand heritage in both its material and immaterial forms, not as a stable and static construct but as potential resource of relevant ideas to be reinterpreted, re-used, and adapted. We will seek new from old, and old from new and explore the ethics and aesthetics of that transformation. Our priority will be the processes of re-use, adaptation and reinterpretation and we will encourage design as an act of editing, overlaying and accumulation.

We will also start from the assumption that heritage sites are hardly ever associated with a single, uniform meaning and that different people will interpret the same place in a variety of ways, based on narratives that have developed in the community or communities to which they belong. The visibility of each narrative can be the result of historical accident, curatorial choice, or power relations. Our aim will be to provide thoughtful analysis and criticism of established heritage narratives in different locations and suggest ways in which they might be reinterpreted through architectural interventions that better reflect their multi-layered history and their relevance to the present..

Approach

We aim to encourage a diversity of design approaches and to interrogate and read spaces by means of various techniques such as hand drawing, photography and model making, mapping research, statistical analysis and film. We will also work closely with the National Trust and related community groups to understand their ambitions and priorities and we will also draw on



perspectives from related fields including curation and Fine Art to explore a diversity of possible approaches to introducing new artefacts into heritage settings.

Building Programme

A building programme will be developed through a process of theoretical, historical and urban research. Each student will build a research base that will then inform a programme for a building born out of a clear understanding of the location and the chosen National Trust site..



Stage 5 students working in Washington will develop a programme that interacts with the existing structure of Washington Old Hall, this should involve an installation within the Hall, an addition to the existing building as well as a new build addition somewhere within the vicinity of the Hall. We envisage a wide range of potential building programmes which could include, housing, community programmes, education or research facilities, archive, exhibition or interpretation spaces.

Material Change

Material research will continue to be a key component of our studio this year and we will encourage you to understand . how materials can be chosen in terms of their performance and carbon footprint, their lifespan and future adaptability and how we can source materials locally with consideration to carbon efficiency. We are also interested in how offsite and modern methods of construction could be adopted for use alongside existing structures. Consideration will also be given as to how new materials and technologies might be deployed sensitively within heritage settings, to change performance or to

change perceptions of an existing structure.. The construction of a physical artefact within Washington Old Hall will provide an opportunity for hands-on experience of fabrication and material experimentation and the possibility exploring these research themes directly.

Studio Year Structure

The vertical studio format offers an opportunity for both 5th and 6th year students to learn from one another. We aim to work together as a group to develop common themes and approaches. Our intention with this is to share resources and promote collaboration rather than to limit choices. We can adapt and stretch this approach as our ideas evolve.

Semester 01 – Stage 05 and Stage 06 – 3 week - ‘primer’ study

We aim to start the year with a 3-week primer study culminating in a group exhibition and review at the end of week 3. The intention of the primer is to start the process of discussion around the themes of the studio brief and to start the process of drawing and graphically representing this research.

Semester 01 Stage 05 + 06 – Weeks 3, 4 and 5

In weeks 3 + 4 students will be asked to develop a piece of urban research and mapping to start to move towards the choice of a proposed site for intervention, and a building programme.

In the week commencing 16th October, we aim to make a study trip, we will discuss details of this trip once studio allocations have been agreed.

Semester 01 - Stage 05 and 06

Weeks 7,8,9,10 +11, students will be asked to develop their work towards a masterplan for the site and to develop a detailed analysis of the existing building/structure chosen for reinvention.

We envisage this work to be a thorough and ambitious piece of urban design research and a detailed study of an existing structure or landscape.

The combined urban design and existing building research will form the basis of a strategy for a built intervention in the second semester and for the 6th year will form the basis of their thesis proposal.

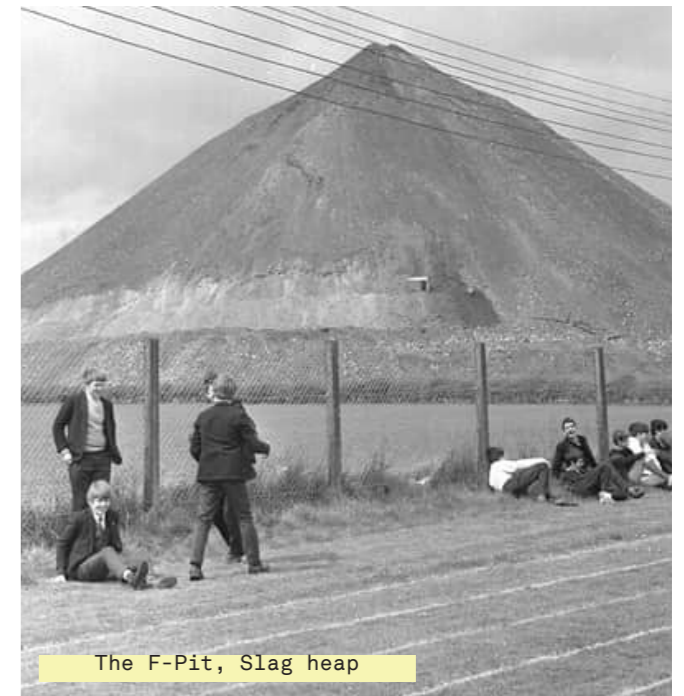
Studio Resources

The studio will be led by Graham Farmer, Dan Burn and Irina Korneychuk.

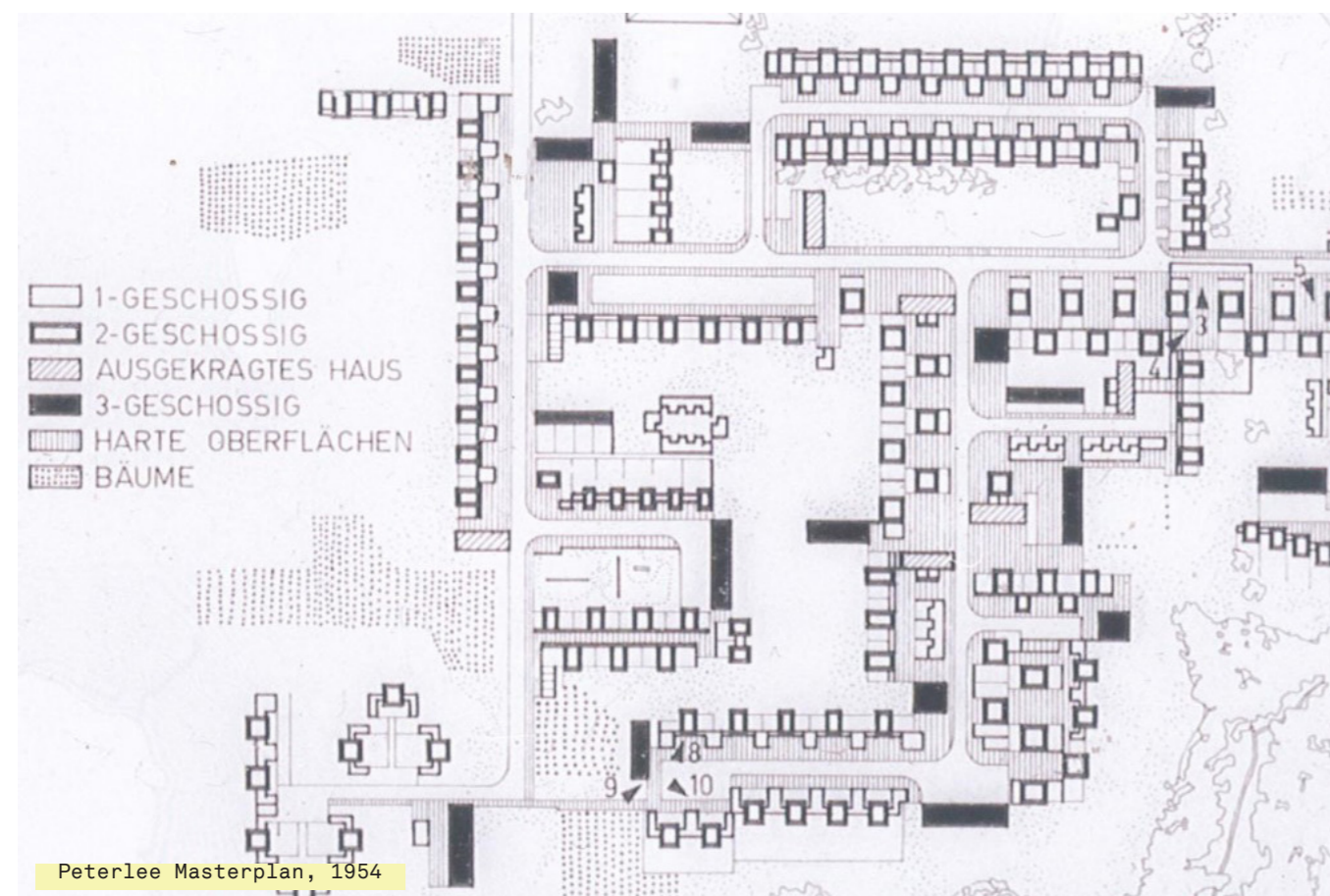
Tutorials will be delivered weekly, either individually or in groups dependent on the stage of the project. We will aim to carry out these tutorials on Friday mornings in the design studio.

At each tutorial or group meeting, students should prepare a sketchbook report to share their design evolution. We will identify any specific deliverables that should be prepared for each tutorial in advance of our meetings.

We will organize technical tutorials in Semester 02 with Faulkner Browns staff and with our network of design consultants. In previous years we have worked with consultants ARUP, Webb Yates, and Max Fordham.



The F-Pit, Slag heap



Peterlee Masterplan, 1954